



Rabbit anti Histone H3 Polyclonal Antibody

Alternative Name(s): HIST1H3A

Order Information

- **Description:** Histone H3
- **Catalogue:** 620-360
- **Lot:** See label
- **Size:** 100ug/200ul
- **Host:** Rabbit
- **Clone:** nan
- **Application:** IHC(P), WB, IP
- **Reactivity:** Hu, Ms, Rt, Ck, Bv

ANTIGEN PREPARATION

A synthetic peptide within ~100 amino acids from N-terminus of human histone H3.

BACKGROUND

Histones are basic nuclear proteins that together with DNA make up the nucleosome structure in eukaryotes. Nucleosomes consist of approximately 146 bp of DNA wrapped around a histone octamer composed of pairs of each of the four core histones (H2A, H2B, H3, and H4). The sequence is found in all mammals and a wide range of species, including *D. melanogaster*, *Arabidopsis*, Chicken and *Xenopus*.

PURIFICATION

The Rabbit IgG is purified by Epitope Affinity Purification

FORMULATION

This affinity purified antibody is supplied in sterile Phosphatebuffered saline (pH7.2) containing antibody stabilizer

SPECIFICITY

This antibody only recognizes ~ 17 kDa of Histone H3 protein.

STORAGE

The antibodies are stable for 24 months from date of receipt when stored at -20oC to -70oC. The antibodies can be stored at 2oC-8oC for three month without detectable loss of activity. Avoid repeated freezing-thawing cycles.

APPLICATIONS/SUGGESTED WORKING DILUTIONS*

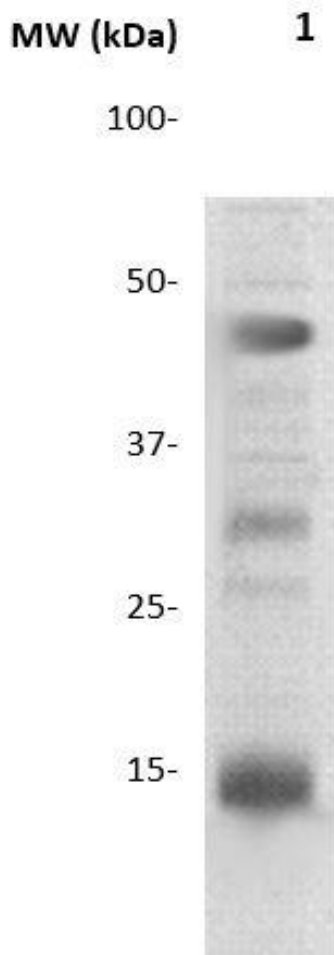
- Western Blot: 0.1-1 µg/ml
- ELISA: 0.01-0.1 µg/ml
- Immunoprecipitation: 2-5 µg/ml
- IHC: 2-10 µg/ml
- Flow cytometry: Not tested
- Molecular Weight: 17.0
- Positive Control: Kidney Tissue
- Cellular Location: Cell Membrane

*Optimal dilutions should be determined by researchers for the specific applications.

FOR RESEARCH USE ONLY.

AbboMax, Inc 2528 Qume Drive, Suite 8, San Jose, California 95131, USA
1 408-573-1898 (Tel). 1 408-573-1858 (Fax). www.abbomax.com info@abbomax.com

DATA ATTACHMENTS



Western Blot: The nuclear extract derived from HELA were immunoprecipitated by 4 ug of Rabbit anti Histone H3 (Cat#620-360), then probed with Rb anti Histone H3, (Cat # 620-360) at 1:1000. An immunoreactive band at ~17kDa is observed. Note: ~50 kDa and ~22 kDa are the rabbit immunoglobulin heavy and light chains.

REFERENCES

FOR RESEARCH USE ONLY.